



Sony Ericsson

# Component Replacement

## - electrical -



**C901**



## CONTENTS

<b>1 Replaceable Components .....</b>	<b>3</b>
<b>RYT113955/2.....</b>	<b>3</b>
<b>2 Component Placing.....</b>	<b>5</b>
<b>3 Repair Actions .....</b>	<b>6</b>
<b>3.1 Shield Can Fence Modifications.....</b>	<b>6</b>
<b>3.2 Additional Repair Info .....</b>	<b>7</b>
3.2.1 E1002,-03,-04,-05,-06,-07,-08 .....	7
3.2.2 L4200, V2200, V4203, X4400.....	7
3.2.3 N1200, V2415, V2416 .....	7
3.2.4 V2470 .....	7
<b>4 Revision History .....</b>	<b>8</b>



# 1 Replaceable Components

## EXPLANATION OF ABBREVIATIONS USED IN THE COLUMN 'COMMENTS' BELOW

**Moisture Sensitivity Level:** MSLX (X = 1, 2, 2A, 3, 4, 5, 5A or 6)

**For more information on moisture sensitivity levels:**

**Refer to the 'Generic Repair Manual – electrical', section 'Moisture & Baking'!**

**Component Location:** **P** = Primary side, **S** = Secondary side

**Repair Method:** **HA** = Hot Air, **SI** = Solder Iron, **BH** = Bottom Heater, **BGA** = BGA Station

**Additional Information:** ⇨ = Go to 'Additional Repair Info' for further instructions

**Calibration:** **C** = Calibration of the phone is required after replacing the component

**Calibration to be done by authorized centers only!**

Position	Designation	Part no.	Comments
B2100	Crystal	RTM501911/1R1A	A; HA; C
B3105	Microphone connector	1200-2112	A; HA
C2214	Capacitor 220.0 uF 4.0 V	1205-9750	A; HA; BH
E1002,-03,-04,-05,-05,-06,-07,-08	Conn Leaf Spring 0p Finger	1205-9275	A; HA; ⇨1
L2200	Ind WW 4.7 uH +-20% 2,95x2,95x0,9	1201-2245	A; HA
L2201	120ohm 0603 2A 50mohm Bead	REG70605/15R1	A; HA
L2401,-02,-03,-04	Inductor	REG70618/20	B; HA
L2406	1kohm 0402 0.2A 0.9ohm	REG70618/4	B; HA
L2408	Transformer	REG70609/06	B; HA
L4200	Inductor Chip	1200-6306	A; HA; ⇨2
N1200	Tiger 1,2,5 (pre-bumped) (LAM)	1218-1883	A; BGA; C; ⇨3
N1200	Pre-bumped Tiger II Band 1,8 (ROW)	1218-1888	A; BGA; C
N1210	IC Linear (LAM & ROW)	1203-5870	B; HA
N1211	ASIC (LAM & ROW)	1204-5903	A; HA
N1300	Bluetooth and RDS FM radio tuner.	1200-9840	A; PGA
N2201	LDO, 3.0V, 150mA, CS-4	RYT113955/7	A; HA
N2205	IC Vreg 8-pin TDFN 2x2x0.8mm	1211-8714	B; HA; BH
N2206	LDO Dual 2.8 V & 1.8 V.	1201-6517	B; HA; BH
N2213	IC Vreg 6 uDFN-6	1208-4678	B; HA
N2214	LDO. 2.8V. 150mA. CS-4	RYT113955/2	A; HA
N2215	IC Vreg MAX8640, 1.8V	1200-6420	A; HA
N2411	ASIC	1204-5837	B; HA
N2420	IC IF ISP1508 ES3 (3.5*3.5*0.8)	1200-1694	A; HA
N2421	IC ESD Prot UDFN 6 2x2 mm	1200-6309	B; HA
N2422	ASIC Baseband	1201-4120	B; HA
N3100	IC CS-9	1200-9978	B; HA
N3101	ASIC Tjatte3 CSP20	ROP1013074/1R1A	B; HA
N4200	Light Sensor	RKZ433938/1	B; HA
N4400	IC Dri MAX8830 ES3 4x4 UCSP	1200-1922	B; HA
V2200	Diode	RKZ223911/1	A; HA; ⇨2
V2202	Transistor	RYN122910/1	B; HA
V2412, V2417	Diode	RKZ223905/2	B; HA
V2415, V2416	Diode	1201-8440	A; HA; ⇨3
V2470	Schottky Barrier Diodes 2PIN	RKZ123905/1	B; HA; ⇨4
V3101	Dual ESD protection diode 6V	RKZ223914/2	A; HA
V4200	Transistor, Mosfet, N-Channel	RYN123915/1	A; HA
V4201	Diode	RKZ123905/2	A; HA
V4203	Trans Array	1200-0320	A; HA; ⇨2



## Component Replacement (elect)

Position	Designation	Part no.	Comments
X1100, X1101, X1210, X1211	Conn Leaf Spring	SND90161R2	A; HA; BH
X1200	Connector	1203-9688	A; HA; BH
X2201	Battery Leaf Connector	1201-0774	A; HA; BH
X2401	Conn BtB 24 pin	1201-5197	A; HA; BH
X2402	Conn SIM Card	1200-9596	A; HA; BH
X2410	Connector FPC 26p	1205-5606	B; HA; BH
X4203	Conn BtB 28 pin	1201-9966	A; HA; BH
X4300	Conn BtB Receptacle 34p	1210-8230	A; HA; BH
X4400	Connector	1202-9266	A; HA; BH; ⇨2
Z2400	Filter	1201-6833	A; HA



## 2 Component Placing

To access the Component Placing document, double-click the icon below.





## 3 Repair Actions

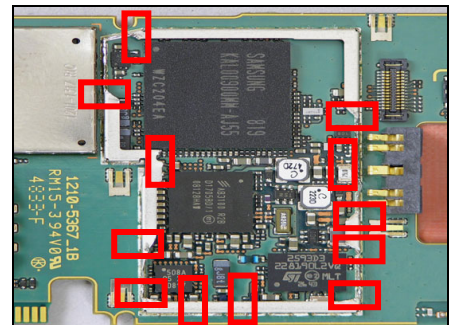
**Refer to the Tools Catalogue and/or Tools Matrix for information about equipment that is required for PBA repair!**

### 3.1 Shield Can Fence Modifications

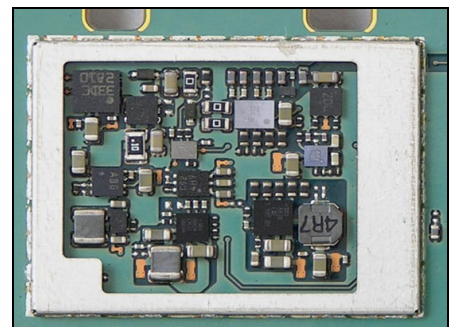
Refer to the pictures below of the primary and secondary sides for repairs that require the Shield Can Fence to be modified:

- the shield can lid has to be removed
- the red symbols show where the frame should be cut to enable rework
- after rework the height of the frame should not be affected
- it should not be visible that rework has been carried out when the lid has been mounted

**Side A**



**Side B**



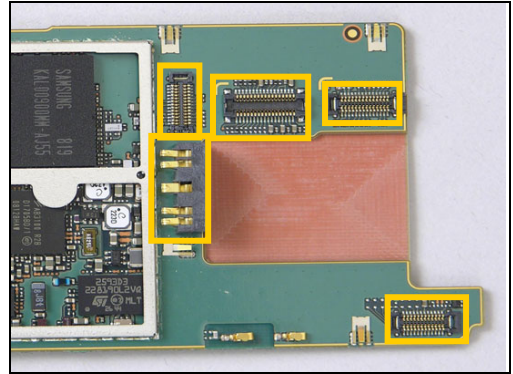


## Repair Actions

### 3.2 Additional Repair Info

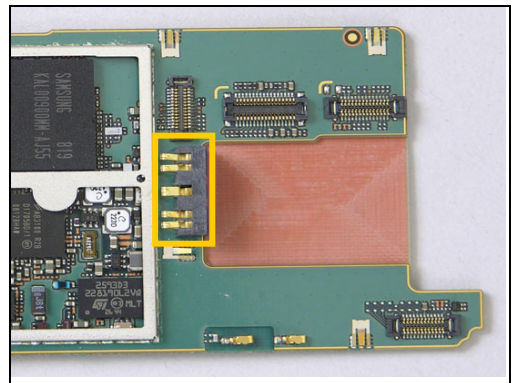
#### 3.2.1 E1002,-03,-04,-05,-06,-07,-08

**Protect the battery and btb connectors with Capton tape**



#### 3.2.2 L4200, V2200, V4203, X4400

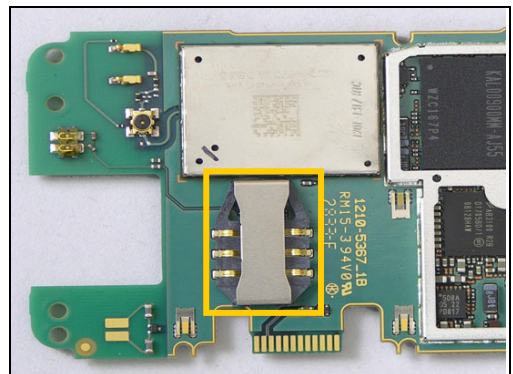
**Protect the battery connector with Capton tape**



#### 3.2.3 N1200, V2415, V2416

**Protect the SIM reader with Capton tape**

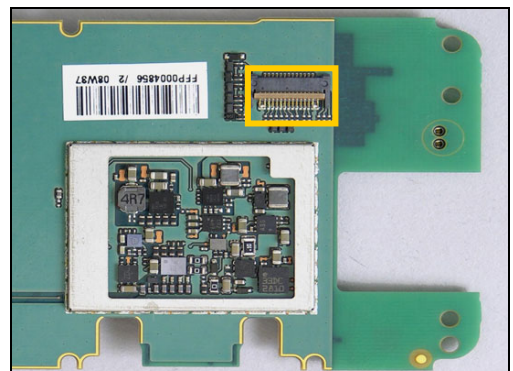
Require SERP Calibration



#### 3.2.4 V2470

**Protect the ZIF connector with Capton tape**

Polarized Component





## 4 Revision History

Rev.	Date	Changes / Comments
1	2009-May-28	First version